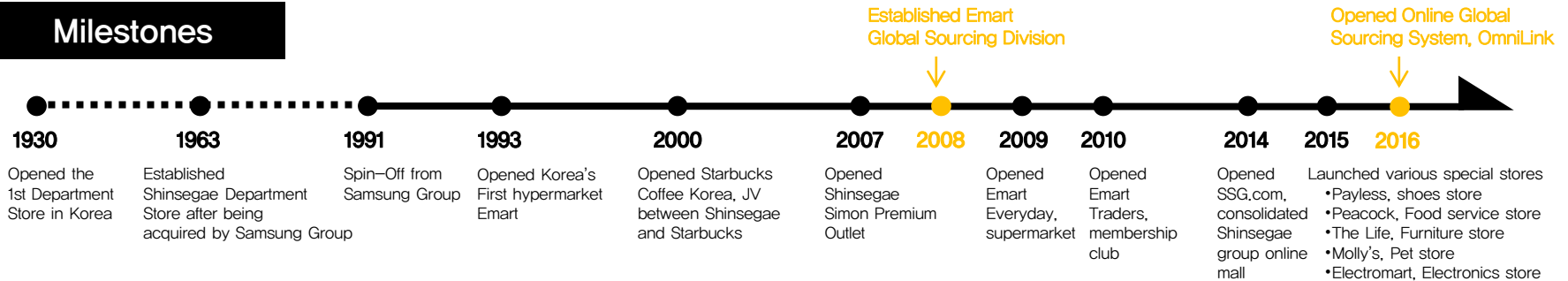


Shinsegae & Emart Introduction

The Shinsegae group as Korea's oldest retailer has upheld a reputation for quality and excellence (First Department Store & No. 1 Hypermarket in Korea)

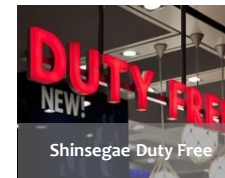
Milestones



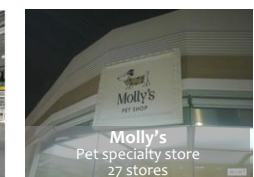
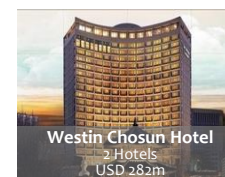
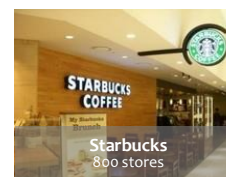
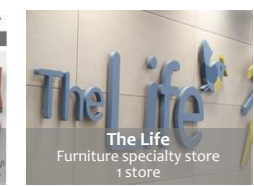
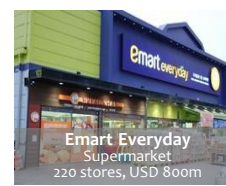
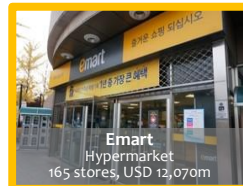
Shinsegae Group

Total USD 24billion in sales

 SHINSEGAE



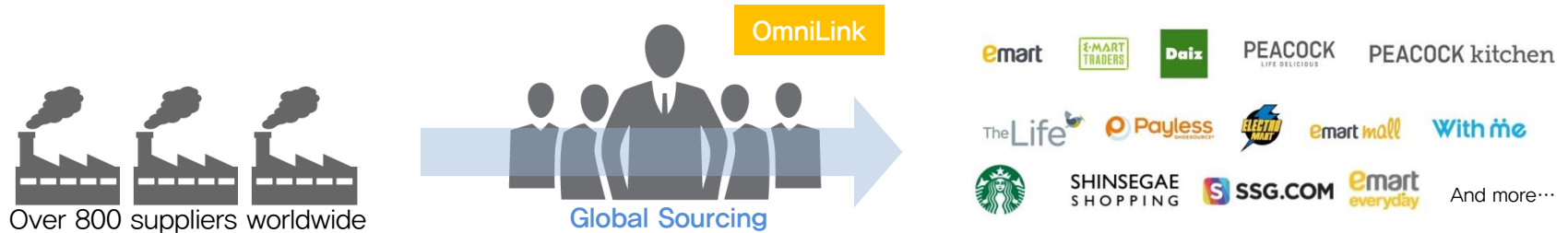
 emart



* 2013 sales

E-mart Global Sourcing

Provide our customers the products they need and want, differentiation in brand, items and values, and providing suppliers opportunity for consistent growth built on relationship of EDLC (Every Day Low Cost), innovation, quality always, excellent service and ethical standard



* Our Categories include Produce, Meats, Fish, Deli, Ready meal, Snack, Condiment, Coffee, Beverage, Dairy, Beauty care, Cosmetic, Bedding, Bath, Detergent, Papers, Pet goods, Furniture, Kitchen ware, Electronics, Toys, Stationery, Apparel, Fashion Accessary and Sports goods etc.

56 Countries
15,000 Products
836 Suppliers

120 Employees all around the world:
8 Global Sourcing HQ Teams
6 Global Sourcing Overseas offices

